

## Lager p. Container



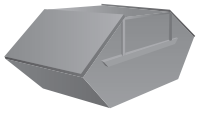
1 m<sup>3</sup>



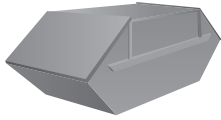
1 m<sup>3</sup>

Behälter, flüssigkeitsdicht

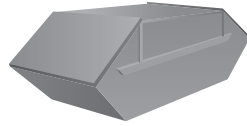
## Mulde mit Deckel:



5m<sup>3</sup>

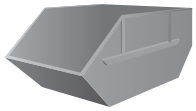


7m<sup>3</sup>

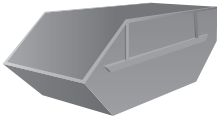


10m<sup>3</sup>

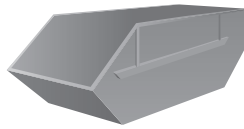
## Mulde offen:



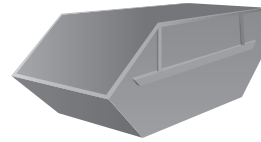
5 m<sup>3</sup>



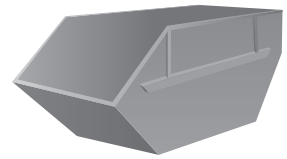
7 m<sup>3</sup>



10 m<sup>3</sup>

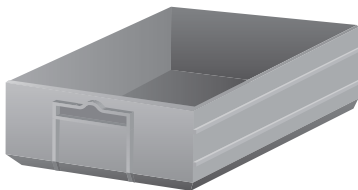


12 m<sup>3</sup>

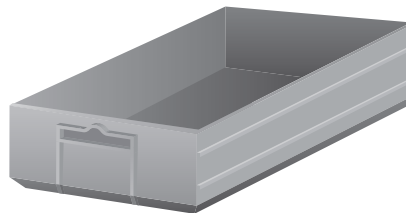


15 m<sup>3</sup>

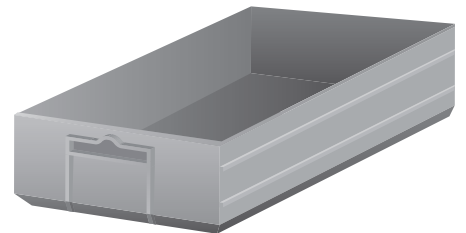
## Container offen:



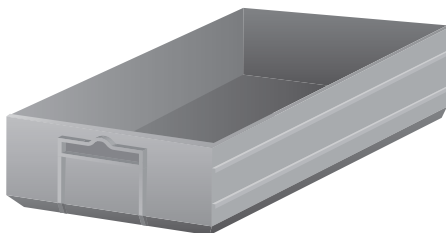
18 m<sup>3</sup>



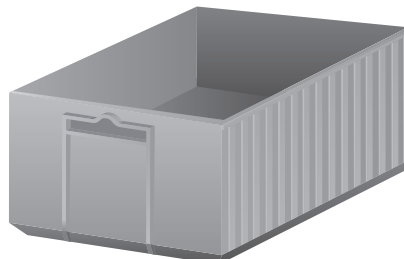
20 m<sup>3</sup>



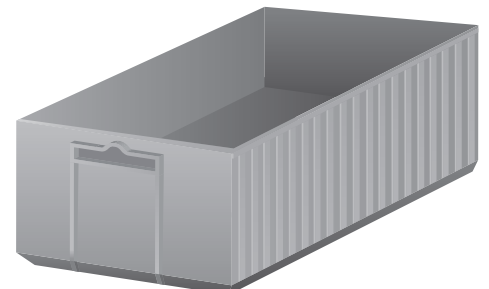
22 m<sup>3</sup>



25 m<sup>3</sup>



30 m<sup>3</sup>



40 m<sup>3</sup>